

# SWEEP Block Grant PILOT Program

Presented by,  
RCD of Tehama County



CALIFORNIA DEPARTMENT OF  
FOOD AND AGRICULTURE



# SWEEP

- State Water Efficiency and Enhancement Program
- Purpose is to provide financial incentives for California agricultural operations to invest in irrigation systems that save water and reduce greenhouse gas (GHG)

## Prior Rounds

- A grant application process administered by the California Department of Food and Agriculture (CDFA)
- \$50 M for the year 2021-2022



THE OFFICE OF

**environmental farming & innovation**

# RCD of Tehama County

- Awarded \$4,465,000 as Block Grant Recipient (BGR)
- Available to Tehama County commercial ag producers
  - *Limited applications accepted from Shasta County*
- Glenn RCD & Butte Farm Bureau also awarded as BGRs
- Applicants can apply directly to BGRs
  - *Each BGR could have different rules and requirements!*
- ~~• Applications also accepted directly to CDFR through Jan 26th~~
- Northern Sac Valley = 15 million in SWEEP funding!!!



# SWEEP Project Types

- Improved irrigation water management
- Soil, Weather, Plant Sensors
- Micro-irrigation
- Improved energy efficiency - Pump replacement or retrofit
- Fuel conversion – Including renewable energy installations
- Variable frequency drives
- Low pressure systems
- Reduced Pumping
- Other projects that combine water savings and GHG reductions



# Funding and Duration

- 2023 SWEEP funding comes from CA's General Fund
  - *Taxpayer funded*
- ~~\$21 million available directly through CDEFA~~
  - ~~December 5<sup>th</sup> – January 26<sup>th</sup>~~
- \$14 million available in Northern Sacramento Valley
- Other BGR funds available, *see BGR handout*
  - All project Grant Amounts: Not to exceed \$200,000
- Project Duration: 18 months (approximately)
  - *Projects must be completed by March 2026*

# Solicitation Timeline

Tentative timeline for 2023 SWEEP Incentives Program

Item	Estimated Timeframe*
Application opens	January 5, 2024
Review and awards	Jan – March 2024
Signing contracts	March - May 2024
Project implementation start	April – June 2024
Projects completed	March 2026

# Request for Grant Applications (RGA)

*<https://www.tehamacountyrcd.org/>*

- RGA contains all program information (instruction manual)
- Notable Updates:
  - Applying directly to local agencies
  - Grant duration is approximately 18 months
  - Using Project Assessment Tool (PAT) – No calculators!
  - Supporting Priority Populations and SDFRs (25% of funds)
  - Additional funding for previously used APNs
    - Cannot replace previous SWEEP components
  - Strengthened limits on multiple applications per grower
    - Attempting to distribute funds widely and equitably

# Request for Grant Applications (RGA)

<https://www.tehamacountyrca.org/>

- More Notable Updates:

- Updates to the scoring rubric
  - *No previous SWEEP awards = 2 pts*
  - *Farm and ranch operation under 250 acres = 2 pts*
  - *Reducing GW pumping in critically over-drafted basins = 2 pts*
  - *Irrigation efficiency not captured in calculator = 4 pts*
    - Micro to micro
    - Impact to rotator
  - *Membership in Irrigated Lands Program (STWEC) = 4 points*
  - *Points deducted if project exceeds 65% solar = -5*
  - *Complete scoring rubric located in the RGA*



# Eligibility

California farmers, ranchers and Federal and California Recognized Native American Indian Tribes are eligible to apply.

- The project must be in Tehama or Southern Shasta County
- For the purposes of this program, an agricultural operation is defined as row, vineyard, field and tree crops, commercial nurseries, nursery stock production, and greenhouse operations producing food crops or flowers as defined in Food and Agricultural Code section 77911
- An agricultural operation entity cannot receive a total cumulative SWEEP award amount of more than \$600,000
- An applicant must be at least 18 years old
- Project must save water **AND** reduce GHG



# Exclusions

- Academic University research institutions and state governmental organizations are not eligible for funding.
- SWEEP funding cannot be combined with NRCS EQIP to fund the same components (but can be used to complement).
- Applying for multiple projects
- Outside service area
  - Tehama and Southern Shasta Counties only!



# Program Restrictions

SWEEP grant funds cannot be used to:

- Expand existing agricultural operations (i.e., additional new acreage cannot be converted to farmland)
- Install new groundwater wells or increase well depth
- Test experimental technology or perform research
- Pay for engineering costs associated with the project design, development and planning
- Purchase tools and equipment with a useful life of less than two years

# Priority Funding

RCDTC will award at least 25% of the funds to the following:

Socially Disadvantaged Farmers (SDFR) as defined by the Farmer Equity Act of 2017:

“Socially disadvantaged group” means a group whose members have been subjected to racial, ethnic, or gender prejudice because of their identity as members of a group without regard to their individual qualities. The Farmer Equity Act of 2017 identifies the following as socially disadvantaged groups: African Americans; Native Indians; Alaskan Natives; Hispanics; Asian Americans; and Native Hawaiians and Pacific Islanders.

# Program Requirements

- Only submit one application using the operation's legal business name and unique tax identification number. If submitting as a sole proprietor, use the last four digits of the individual's social security number
- Must include flow meters or demonstrate water use will be measured with existing flow meters or by the water supplier
- Complete pump efficiency test
  - Up to 2 years old
  - Must have pump efficiency rating %



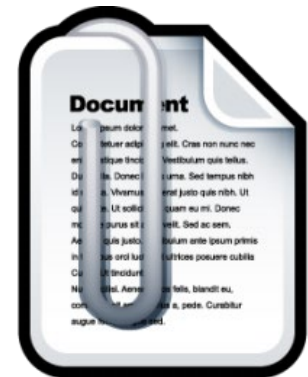
# Program Requirements

- Must complete RCDTC application, not CDFA's!
  - <https://www.tehamacountyrcd.org/>
- Must use the new Project Assessment Tool (PAT)
  - Old GHG and irrigation calculators eliminated
  - Results from PAT needed to complete application
- Complete all attachments



# Application Attachments

- Project design
  - Can use PAT as base layer
- Completed Budget Worksheet
- Quotes for all major components!
  - Parts and labor
- Completed PAT
  - Download all 3 files and attach to app: map, report and project file
- Twelve consecutive months of baseline GHG emission/energy use documentation for any pumps that are impacted by the project (e.g., fuel receipts or utility bills)
- Pump efficiency tests



# Project Design

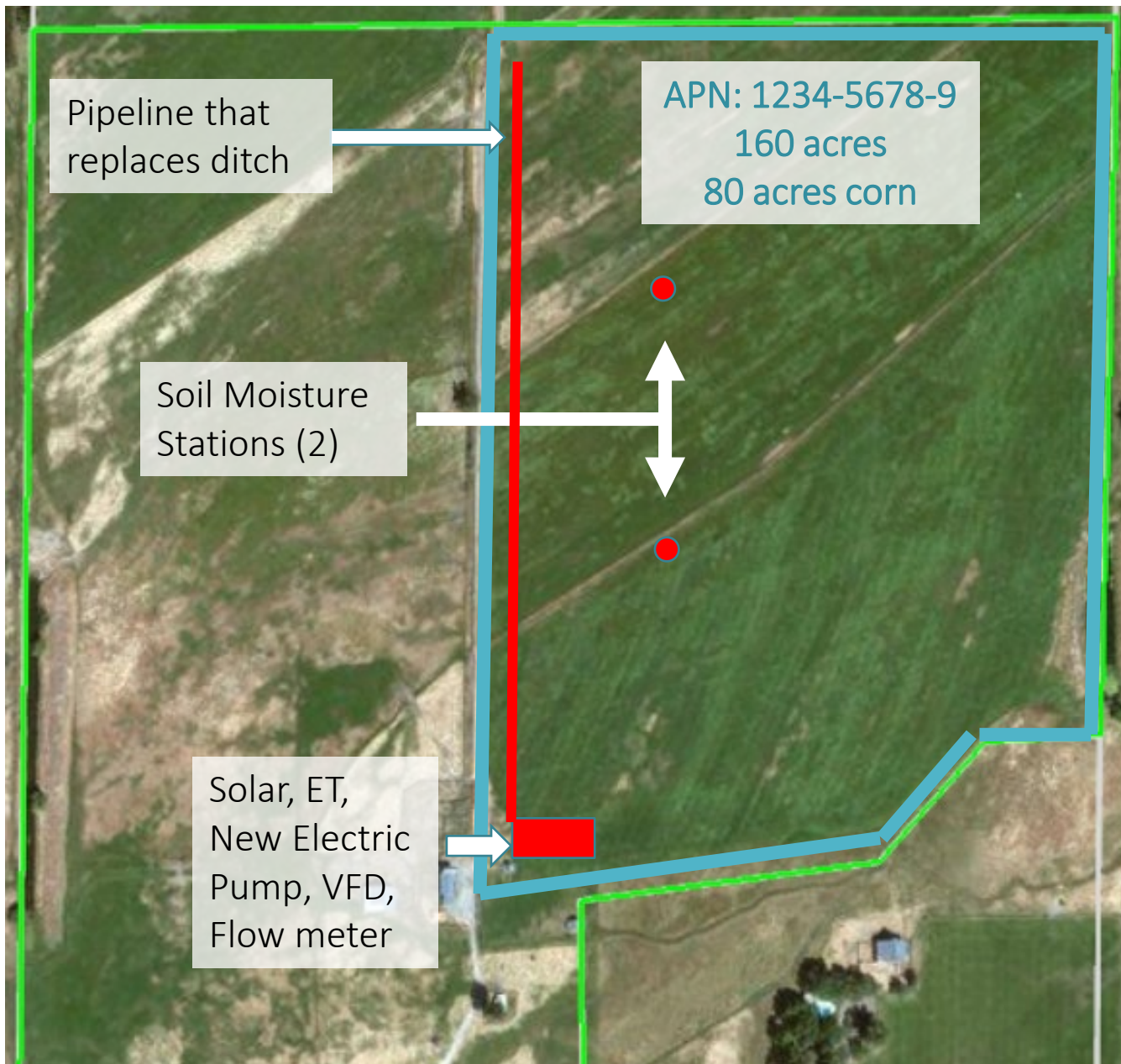
## Holistic project overview

Project designs must include the following, as applicable:

- Labeled Assessor's Parcel Numbers
- Detail the locations of proposed infrastructure
  - *Irrigation piping, reservoirs, pumps, monitoring equipment, solar...*
- Agronomic information, such as the crop, acres and water source
- Energy input source location







# Example of Project Design

# \*\*\* Budget Worksheet \*\*\*

Itemize all allowable costs related to project in categories

- Supplies & Equipment
- Labor
- Other

Must be consistent with project design and all quotes

Projects with unallowable expenses and inaccurate or inconsistent information will not be approved!

See the RGA for a list of allowable and unallowable costs





# Scoring Categories

Scoring Criteria	Maximum points
Merit and Feasibility	10
Water Savings & Calculations	20
Greenhouse Gas Reductions & Calculations	20
Complete Application	10
Additional Considerations	20
<b>Total</b>	<b>80</b>

# Awardee Requirements



If selected for an award, execution of Grant Agreement is conditional upon applicants agreeing to specific program requirements:

- Pre-Project consultation conducted by RCDTC staff to confirm project information and discuss implementation plans. During the pre-project consultation the awardee may be asked to provide additional information about the project site and project.
- Signing and agreeing to terms and conditions in contract
  - Invoicing requirements
  - Workplan and project timeline
- Regular correspondence with RCDTC staff
- Regular site visits from RCDTC staff as project progresses
- Post-project data collection and analysis by RCDTC staff
- Expectation to use and maintain the installed system for a minimum of 10 years

# How To Apply

- Access the application from the RCDTC webpage
- Log in to access application and submit
- Jotform



Have on hand:

- Project design
- Budget
- Quotes
- PAT
- Pump test
- 12 months energy records

<https://www.tehamacountyrcd.org/>



# SWEEP Resources

- Links to application, PAT and budget worksheet at RCDTC website
  - <https://www.tehamacountyrcd.org/>
- Additional resources at CDFA website
  - <https://www.cdfa.ca.gov/oefi/sweep/>
    - Videos
    - Previously awarded projects
    - FAQ

# On Another Note...

*The RCDDTC will be moving!*

- Last week at Sutter St. February 26<sup>th</sup>
- In person assistance location TBD
  - New building, Farm Bureau, Ag Commissioner office...?
  - Email and phone contact info will be the same!







Questions?

Our Team:  
Amy Garrison  
Lisa Krumwide  
Kevin Greer

Reach us at:

[agriculture@tehamacountyrcd.org](mailto:agriculture@tehamacountyrcd.org)

530-727-1280

