

Natural Resources Conservation Service
Farm Service Agency
Department of Fish and Game
US Fish & Wildlife Service
Tehama County Public Works
CalFire
Department of Conservation
Department of Water Resources
US Forest Service
The Nature Conservancy
California Native Plant Society
Anadromous Fish Restoration Program
Deer Creek Watershed Conservancy
National Park Service
Bureau of Reclamation
California Fire Safe Council
UC Cooperative Extension
California State University, Chico
Sierra Nevada Conservancy
Sacramento River Discovery Center
Sunflower CRMP
Sierra Nevada Alliance
City of Red Bluff
Tehama County Resource Advisory Council
Other Resource Conservation Districts

References available upon request.

INFORMATION

For further information regarding
GIS services, please contact:

RESOURCE CONSERVATION DISTRICT OF TEHAMA COUNTY

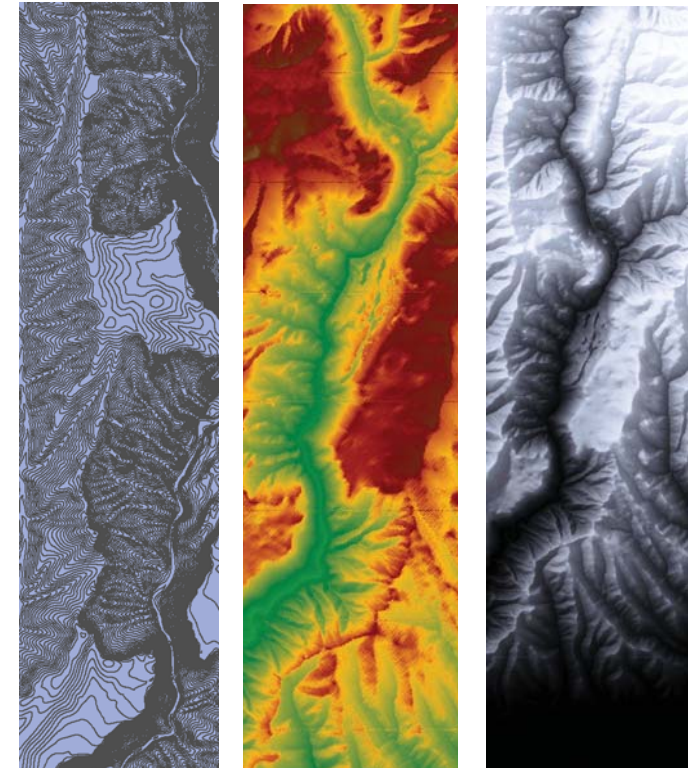
2 Sutter Street, Suite D
Red Bluff, CA 96080

PHONE: 530-737-5191

GIS Manager:
Cathie Cousineau
Email: cathie@tehamacountyrcd.org



GIS TECHNOLOGY



conserve
preserve
manage

RESOURCE CONSERVATION DISTRICT
OF TEHAMA COUNTY

• GIS Services •

OVERVIEW:

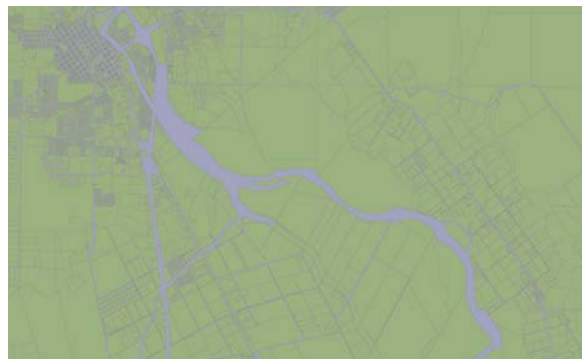
Geographic information systems (GIS) technology is used to create customized digital maps, combining publicly available and field-collected datasets. Analysts use maps, global positioning systems (GPS) data, scanned aerial photographs, satellite imagery, and text/tabular data. GIS technology is being utilized by managers and decision makers to assist with conserving, preserving, and managing our important natural resources.

The GIS team at the Resource Conservation District of Tehama County has a wide range of problem solving and technical skills to aid in your daily operations and in your project work. Going beyond the online mapping tools now familiar to many of us, TCRCO analysts create customized maps and customized analyses tailored to fit specific goals and purposes.

Contracting is available at hourly rates or for a flat fee based upon your particular needs.

Portfolio maps are available for viewing online at the RCD website at:

<http://www.tehamacountyrco.org/services/gis.html>



WHAT CAN GIS DO FOR YOU?

WHERE: Knowing where things are located is essential. Baseline data is an integral component of efficient and effective management of valuable natural resources. Applications for GIS include watershed inventory, rangeland management, asset tracking, documentation of existing conditions, and visualization for public outreach.

WHAT: An inventory of existing conditions is a first step. Field collection of geospatial data can be accomplished through GPS units, digital cameras, raster scanners, and personal interviews. Using GIS, this field data can then be incorporated into ongoing project efforts, furthering collaboration, coordination, and planning.

WHEN: Prioritizing actions ensures that important projects rise to the top. GIS analysis of environmental concerns can yield focused results with clear priorities. For example, GIS can help to quantify erosion potential, determine proximity to conservation lands or to urban encroachment, or compare stream miles, basin areas, and hydrologic discharge between watersheds.

WHY: Clear understanding results in cost-effective and economical projects. Virtual modeling of our environment through GIS enables decision makers to calculate outcomes and to test scenarios in advance, before energy and funds are committed.

SAMPLE PROJECTS

- REGIONAL PLANNING •
- AGRICULTURAL AND FARMLAND PRESERVATION •
- COMMUNITY TRAIL LOCATION •
- GENERAL PLAN REVIEW •
- CHANGE DETECTION •
- HABITAT CONNECTIVITY •
- OPEN SPACE PROTECTION •
- CLIMATE TRENDS •
- SENSITIVE SPECIES •
- WATER QUALITY AND QUANTITY •
- GEOSPATIAL PATTERNS •

GIS STAFF QUALIFICATIONS

The GIS team at the Resource Conservation District of Tehama County includes highly qualified personnel with training in the use of ESRI ArcGIS software, the ENVI remote sensing program, Trimble GPS units and smartphones, and Adobe's Creative Suite of products, including Photoshop, Illustrator, and Dreamweaver. Available equipment includes GIS-enabled laptops with ArcMap, HP wide format printer, Trimble GeoXM GPS, and an extensive library of public and proprietary GIS datasets.

CATHERINE COUSINEAU - GIS Manager. *Cathie coordinates all GIS projects for the RCD and also serves as network administrator. She creates online mapping products and flies a Phantom 4 quadcopter drone for precise aerial imaging.*

Biogeospatial Analysis BS / Geography MA

ADDITIONAL GIS STAFF includes GIS technicians and interns trained in the use of ESRI ArcGIS software.