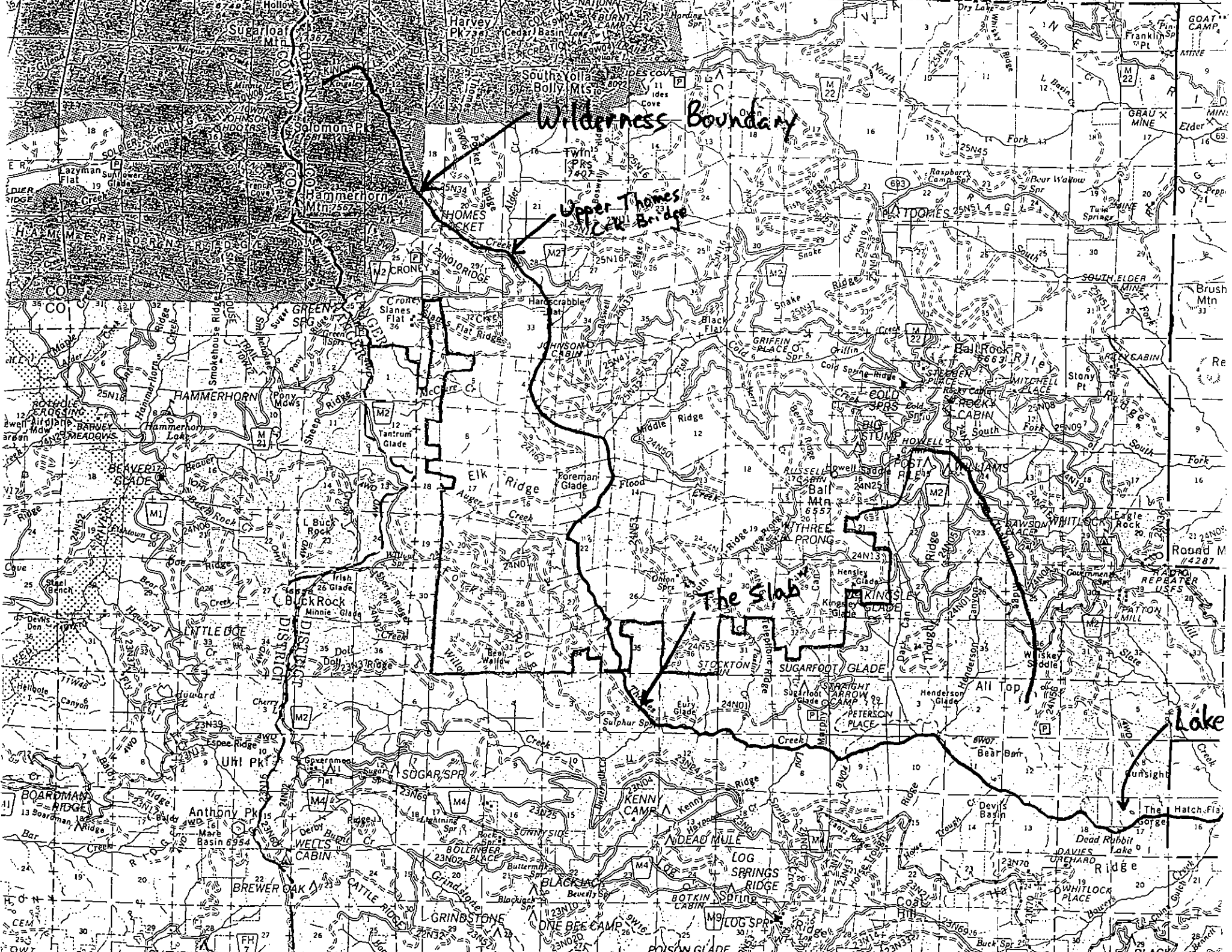


Appendix 7-1

Crane Mills Temperature Data



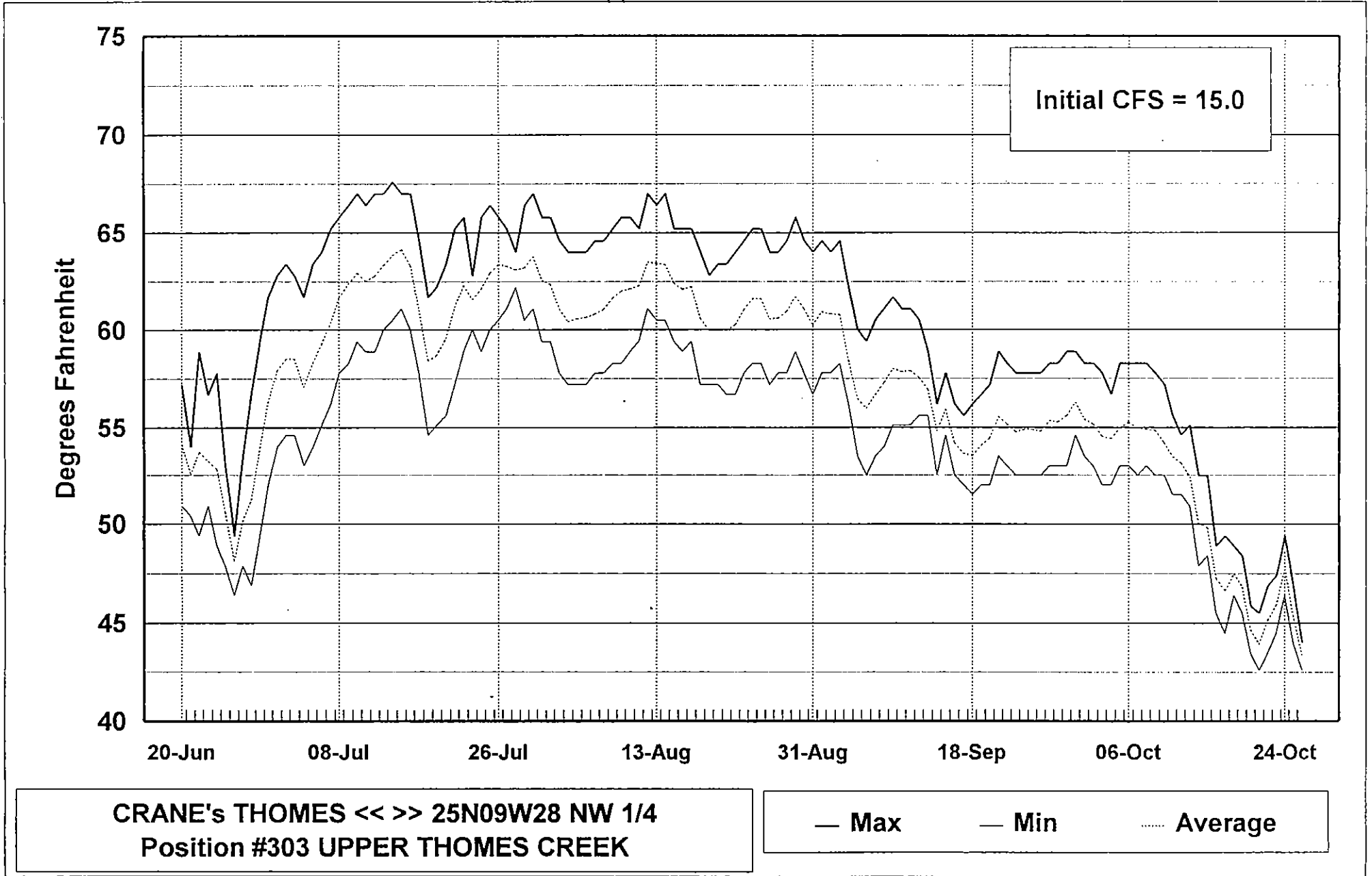
Wilderness Boundary

Upper Thomas
Creek Bridge

The Slab

Lake

1996
Upper Thomes Crk Sta.

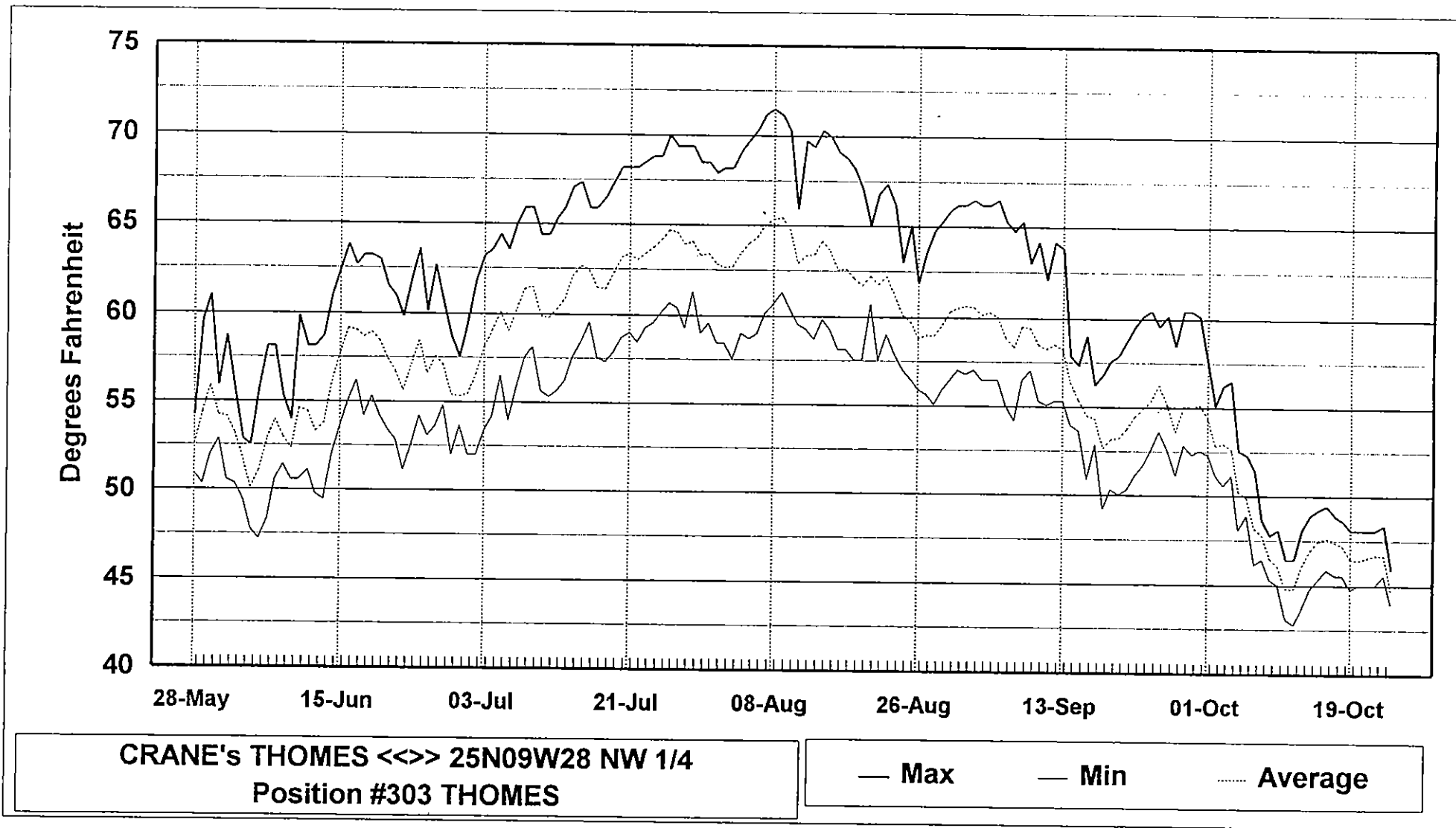


1996
Upper Thomas Crk Sta.

Position #303 UPPER THOMES CREEK

M	D	MAX	MIN	AVG	M	D	MAX	MIN	AVG	M	D	MAX	MIN	AVG	M	D	MAX	MIN	AVG
6	20	57.2	50.9	54.1	7	28	64	62.2	63.1	9	4	62.2	56.2	58.44	10	12	54.6	51.5	53.12
6	21	54	50.4	52.53	7	29	66.4	60.5	63.2	9	5	60	53.5	56.45	10	13	55.1	50.9	52.4
6	22	58.9	49.4	53.72	7	30	67	61.1	63.78	9	6	59.4	52.5	55.97	10	14	52.5	47.9	50.03
6	23	56.7	50.9	53.23	7	31	65.8	59.4	62.56	9	7	60.5	53.5	56.66	10	15	52.5	48.4	49.81
6	24	57.8	48.9	52.79	8	1	65.8	59.4	62.34	9	8	61.1	54	57.32	10	16	48.9	45.5	47.26
6	25	53	47.9	50.58	8	2	64.6	57.8	61.08	9	9	61.7	55.1	58.02	10	17	49.4	44.5	46.63
6	26	49.4	46.4	48.15	8	3	64	57.2	60.4	9	10	61.1	55.1	57.86	10	18	48.9	46.4	47.5
6	27	53.5	47.9	50.13	8	4	64	57.2	60.56	9	11	61.1	55.1	57.9	10	19	48.4	45.5	46.81
6	28	56.7	46.9	51.24	8	5	64	57.2	60.62	9	12	60.5	55.6	57.56	10	20	45.9	43.5	44.64
6	29	59.4	49.4	53.94	8	6	64.6	57.8	60.8	9	13	58.9	55.6	56.93	10	21	45.5	42.6	43.92
6	30	61.7	52	56.29	8	7	64.6	57.8	61.04	9	14	56.2	52.5	54.79	10	22	46.9	43.5	45.15
7	1	62.8	54	57.93	8	8	65.2	58.3	61.65	9	15	57.8	54.6	55.91	10	23	47.4	44.5	45.9
7	2	63.4	54.6	58.53	8	9	65.8	58.3	62	9	16	56.2	52.5	54.2	10	24	49.4	46.4	47.75
7	3	62.8	54.6	58.53	8	10	65.8	58.9	62.11	9	17	55.6	52	53.64	10	25	46.9	44	45.38
7	4	61.7	53	57.07	8	11	65.2	59.4	62.27	9	18	56.2	51.5	53.54	10	26	44	42.6	43.36
7	5	63.4	54	58.33	8	12	67	61.1	63.5	9	19	56.7	52	54.07					
7	6	64	55.1	59.27	8	13	66.4	60.5	63.43	9	20	57.2	52	54.43					
7	7	65.2	56.2	60.33	8	14	67	60.5	63.37	9	21	58.9	53.5	55.54					
7	8	65.8	57.8	61.68	8	15	65.2	59.4	62.39	9	22	58.3	53	55.15					
7	9	66.4	58.3	62.36	8	16	65.2	58.9	62.1	9	23	57.8	52.5	54.74					
7	10	67	59.4	62.93	8	17	65.2	59.4	62.22	9	24	57.8	52.5	54.89					
7	11	66.4	58.9	62.52	8	18	64	57.2	60.58	9	25	57.8	52.5	54.89					
7	12	67	58.9	62.77	8	19	62.8	57.2	59.94	9	26	57.8	52.5	54.8					
7	13	67	60	63.33	8	20	63.4	57.2	59.95	9	27	58.3	53	55.32					
7	14	67.6	60.5	63.85	8	21	63.4	56.7	59.95	9	28	58.3	53	55.26					
7	15	67	61.1	64.14	8	22	64	56.7	60.25	9	29	58.9	53	55.59					
7	16	67	60	63.32	8	23	64.6	57.8	61.04	9	30	58.9	54.6	56.29					
7	17	64.6	57.8	61.03	8	24	65.2	58.3	61.6	10	1	58.3	53.5	55.42					
7	18	61.7	54.6	58.42	8	25	65.2	58.3	61.6	10	2	58.3	53	55.15					
7	19	62.2	55.1	58.68	8	26	64	57.2	60.56	10	3	57.8	52	54.54					
7	20	63.4	55.6	59.56	8	27	64	57.8	60.57	10	4	56.7	52	54.38					
7	21	65.2	57.2	61.15	8	28	64.6	57.8	60.97	10	5	58.3	53	54.94					
7	22	65.8	58.9	62.29	8	29	65.8	58.9	61.71	10	6	58.3	53	55.26					
7	23	62.8	60	61.55	8	30	64.6	57.8	61.07	10	7	58.3	52.5	54.95					
7	24	65.8	58.9	62.11	8	31	64	56.7	60.23	10	8	58.3	53	54.89					
7	25	66.4	60	62.93	9	1	64.6	57.8	60.91	10	9	57.8	52.5	54.84					
7	26	65.8	60.5	63.37	9	2	64	57.8	60.79	10	10	57.2	52.5	54.19					
7	27	65.2	61.1	63.3	9	3	64.6	58.3	60.78	10	11	55.6	51.5	53.49					

1997
Upper Thomes Crk Sta.



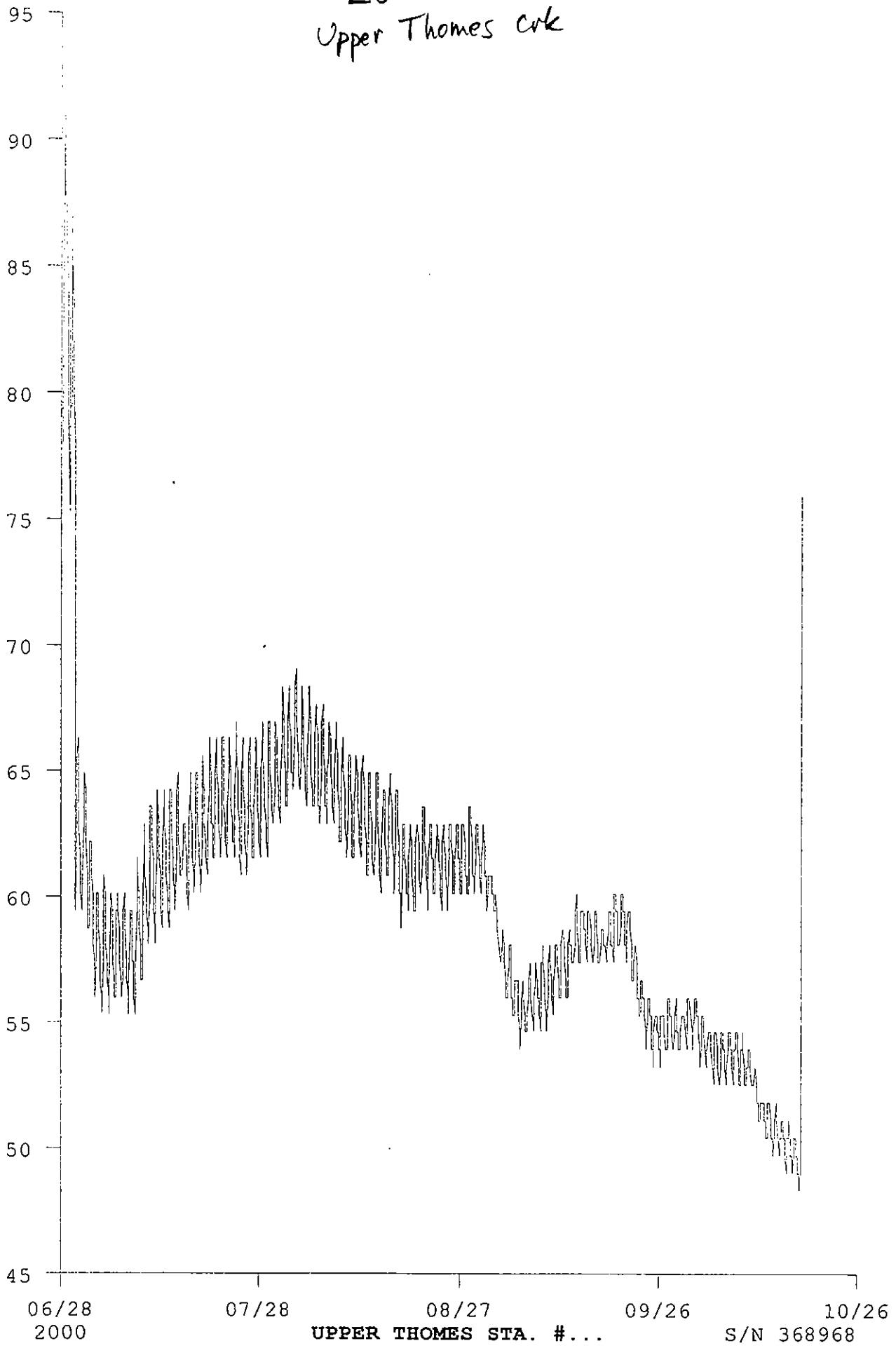
1997
Upper Thomas Crk Sta.

Position #303 THOMES

M	D	MAX	MIN	AVG	M	D	MAX	MIN	AVG	M	D	MAX	MIN	AVG	M	D	MAX	MIN	AVG
5	28	54.21	50.88	52.59	7	5	64.40	56.45	60.09	8	12	69.73	59.26	63.32	9	19	57.56	50.33	53.16
5	29	59.57	50.33	54.42	7	6	63.54	53.96	59.03	8	13	69.39	58.70	63.38	9	20	57.87	50.02	53.24
5	30	60.96	51.99	55.83	7	7	65.03	55.89	60.28	8	14	70.32	59.83	64.16	9	21	58.70	50.33	53.75
5	31	55.89	52.86	54.21	7	8	65.90	57.56	61.40	8	15	69.98	59.26	63.60	9	22	59.57	51.12	54.47
6	1	58.70	50.57	54.14	7	9	65.90	58.12	61.53	8	16	69.13	58.12	62.55	9	23	60.14	51.67	54.88
6	2	55.63	50.33	53.17	7	10	64.40	55.63	59.87	8	17	68.80	58.12	62.60	9	24	60.40	52.55	55.33
6	3	52.86	49.46	51.69	7	11	64.40	55.33	59.80	8	18	68.18	57.56	62.08	9	25	59.57	53.65	56.24
6	4	52.55	47.79	50.09	7	12	65.29	55.63	60.26	8	19	67.04	57.56	61.71	9	26	60.14	52.55	55.14
6	5	55.63	47.23	51.03	7	13	65.90	56.19	60.84	8	20	65.03	60.68	62.23	9	27	58.44	51.12	53.63
6	6	58.12	48.35	52.89	7	14	67.04	57.56	62.09	8	21	66.77	57.56	61.76	9	28	60.40	52.86	55.04
6	7	58.12	50.57	53.97	7	15	67.35	58.44	62.66	8	22	67.35	59.01	62.22	9	29	60.40	52.30	55.01
6	8	55.33	51.42	52.99	7	16	65.90	59.57	62.41	8	23	66.20	57.87	61.17	9	30	60.14	52.55	55.12
6	9	53.96	50.57	52.35	7	17	65.90	57.56	61.47	8	24	62.98	57.00	60.13	10	1	57.56	52.30	54.43
6	10	59.83	50.57	54.59	7	18	66.47	57.31	61.42	8	25	65.03	56.45	59.73	10	2	55.08	51.12	52.81
6	11	58.12	51.12	54.41	7	19	67.35	57.87	62.29	8	26	61.85	55.89	58.81	10	3	56.19	50.57	52.92
6	12	58.12	49.76	53.31	7	20	68.18	58.70	63.14	8	27	63.54	55.63	58.97	10	4	56.45	51.12	52.65
6	13	58.70	49.46	53.75	7	21	68.18	59.01	63.37	8	28	64.73	55.08	58.98	10	5	52.55	48.08	50.23
6	14	60.96	51.99	56.08	7	22	68.18	58.44	63.00	8	29	65.29	55.89	59.60	10	6	52.30	48.89	49.88
6	15	62.42	53.65	57.76	7	23	68.51	59.26	63.37	8	30	65.90	56.45	60.31	10	7	51.42	46.12	48.18
6	16	63.82	55.08	59.16	7	24	68.80	59.57	63.69	8	31	66.20	57.00	60.53	10	8	48.64	46.42	47.80
6	17	62.66	56.19	59.05	7	25	68.80	60.14	64.15	9	1	66.20	56.76	60.62	10	9	47.79	45.31	46.47
6	18	63.23	54.21	58.69	7	26	69.98	60.68	64.68	9	2	66.47	57.00	60.56	10	10	48.08	45.00	46.05
6	19	63.23	55.33	58.95	7	27	69.39	60.40	64.59	9	3	66.20	56.45	60.15	10	11	46.42	43.08	44.79
6	20	62.98	54.21	58.45	7	28	69.39	59.26	63.90	9	4	66.20	56.45	60.27	10	12	46.42	42.76	44.79
6	21	61.52	53.41	57.40	7	29	69.39	61.28	64.06	9	5	66.47	56.45	60.05	10	13	48.08	43.63	46.08
6	22	60.96	52.86	56.66	7	30	68.51	59.01	63.26	9	6	65.29	55.08	58.90	10	14	48.89	44.75	46.96
6	23	59.83	51.12	55.62	7	31	68.51	59.57	63.42	9	7	64.73	54.21	58.32	10	15	49.20	45.31	47.46
6	24	61.85	52.55	57.06	8	1	67.93	58.44	62.83	9	8	65.29	56.45	59.51	10	16	49.46	45.87	47.61
6	25	63.54	54.21	58.47	8	2	68.18	58.44	62.65	9	9	62.98	57.00	59.42	10	17	48.89	45.56	47.40
6	26	60.14	53.10	56.60	8	3	68.18	57.56	62.69	9	10	64.15	55.33	58.48	10	18	48.64	45.56	47.19
6	27	62.66	53.65	57.57	8	4	69.13	59.01	63.50	9	11	62.09	55.08	58.24	10	19	48.08	44.75	46.47
6	28	60.68	54.77	57.08	8	5	69.73	58.70	63.99	9	12	64.15	55.33	58.50	10	20	48.08	45.00	46.40
6	29	58.70	51.99	55.38	8	6	70.32	59.01	64.33	9	13	63.82	55.33	58.23	10	21	48.08	45.00	46.55
6	30	57.56	53.65	55.30	8	7	71.14	60.14	65.00	9	14	57.87	53.96	56.35	10	22	48.08	45.00	46.69
7	1	59.57	51.99	55.44	8	8	71.49	60.68	65.35	9	15	57.31	53.65	55.37	10	23	48.35	45.56	46.69
7	2	61.85	51.99	56.55	8	9	71.14	61.28	65.41	9	16	59.01	50.88	54.52	10	24	45.87	43.89	44.71
7	3	63.23	53.41	58.16	8	10	70.32	60.40	64.77	9	17	56.19	52.86	54.37					
7	4	63.54	54.21	59.06	8	11	65.90	59.57	62.91	9	18	56.76	49.20	52.67					

2000
Upper Thames cwk

F
E
R
R
I
T
E
R
M
E
T
E
R



06/28
2000

07/28

08/27

09/26

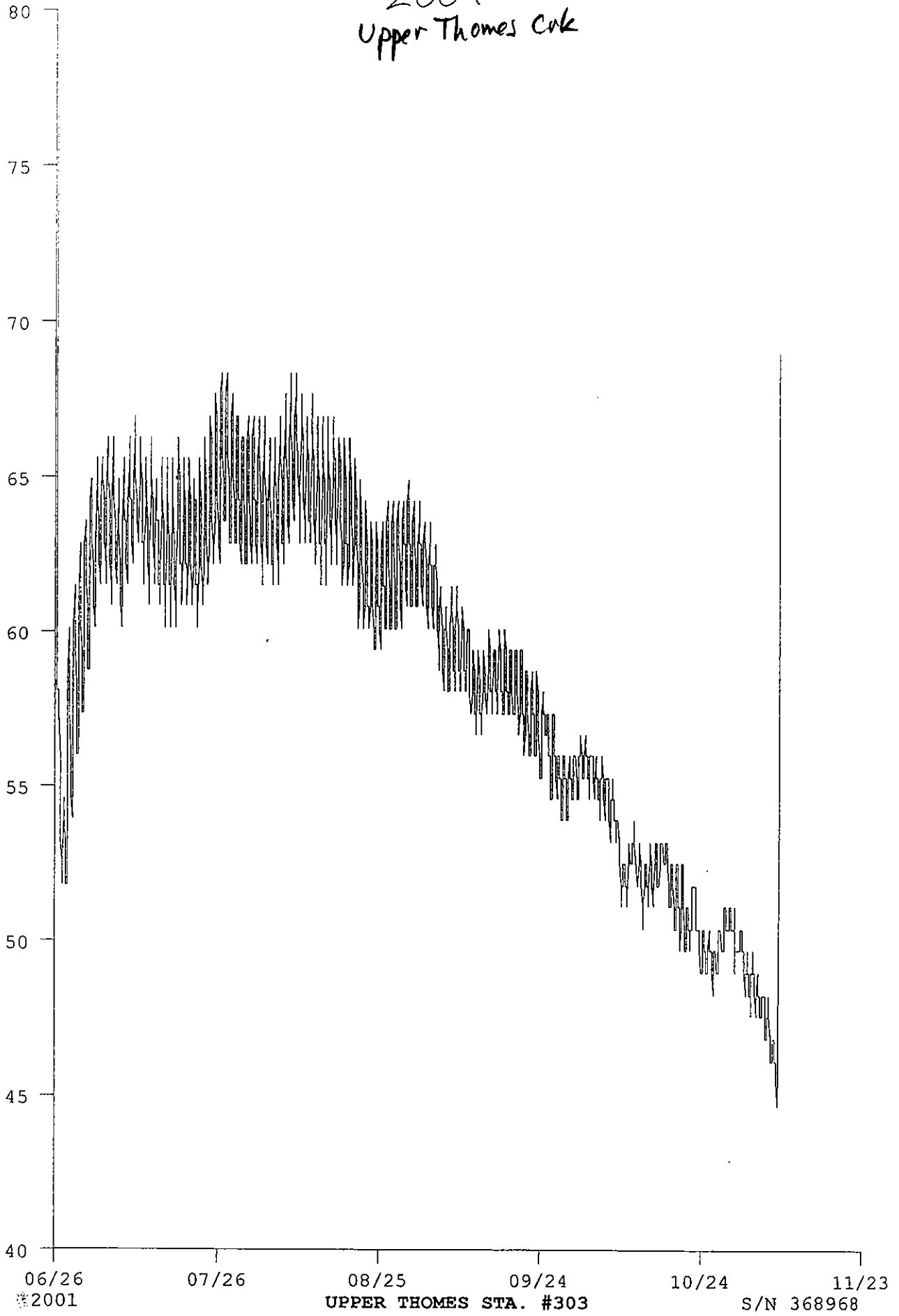
10/26

UPPER THAMES STA. #...

S/N 368968

2001
Upper Thames Cok

F
E
E
F
E
H
A
T
U
R
E



06/26
2001

07/26
08/25
09/24
UPPER THAMES STA. #303

10/24
11/23
S/N 368968

85

Upper series

Lower

80

75

70

65

60

55

50

45

Temperature

06/21 2002

07/21

08/20

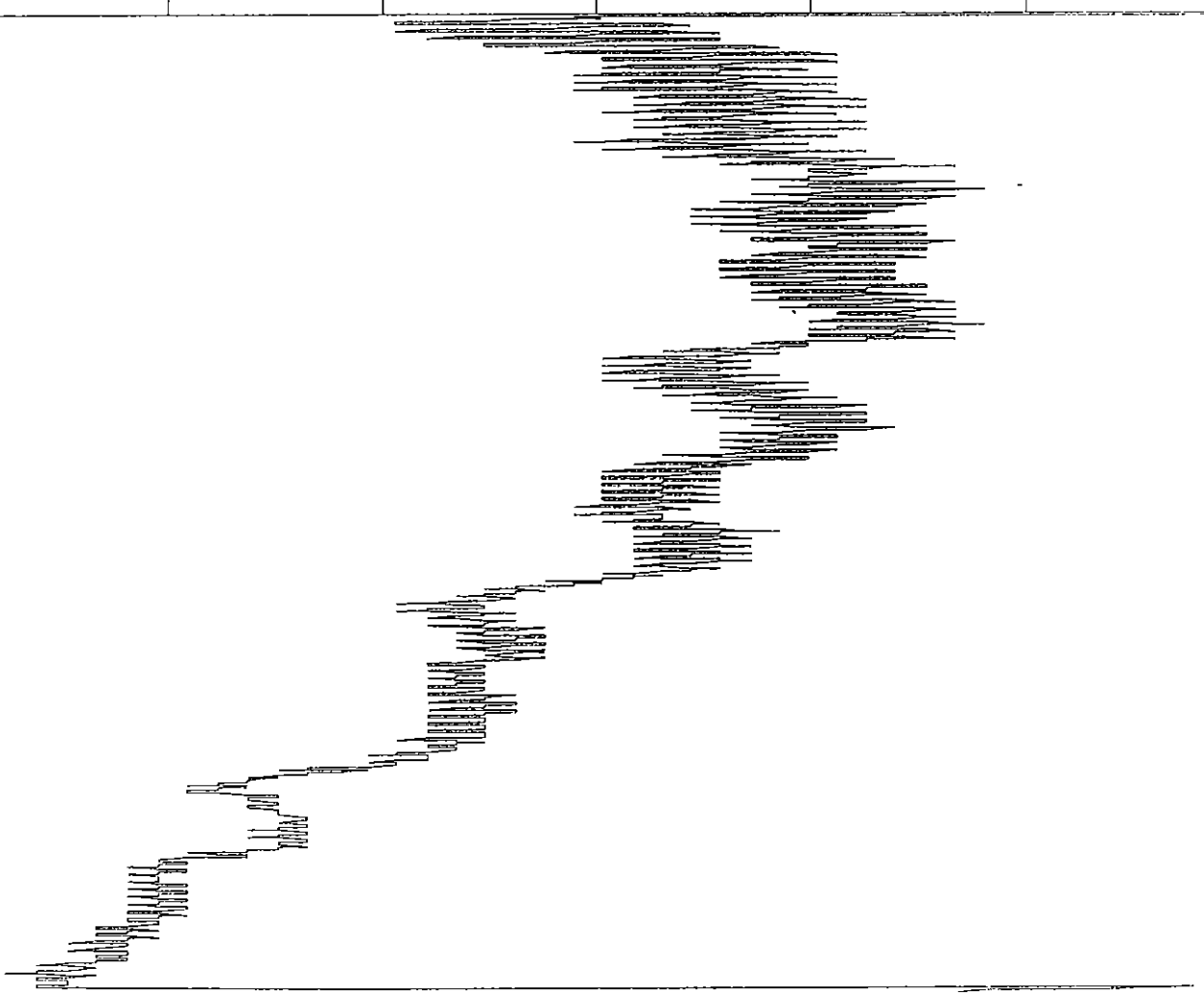
09/19

10/19

11/18

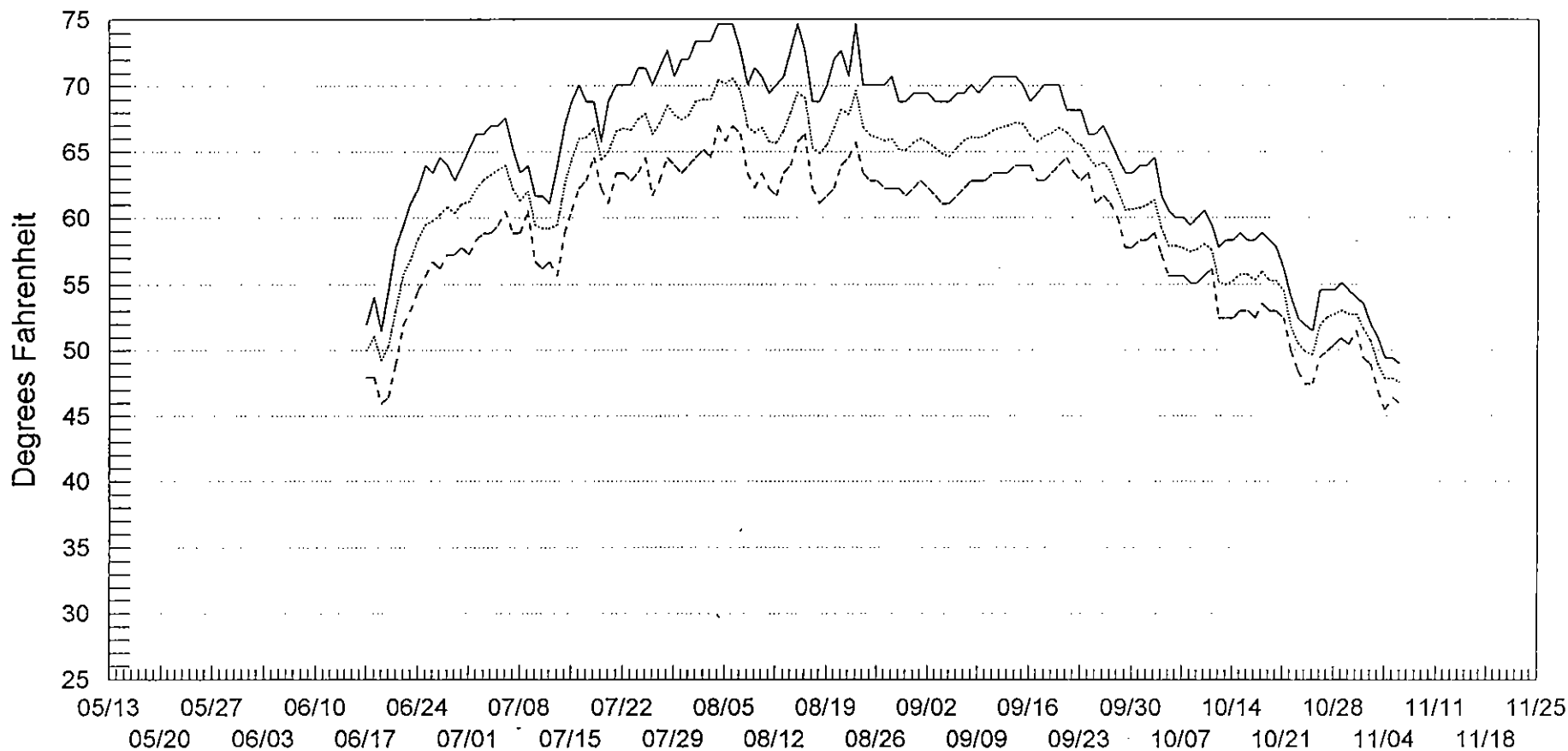
UPPER THOMES STA. #303

S/N 368968



1995 Lower Thames Crk Sta.

Crane Mills
Thermo 13088 - Pos. 306



THOMES - LOWER THOMES CREEK
Legal 23N09W02 (SE 1/4 SE 1/4)

— Max -- Min - - - Avg

1995 Lower Thames Crk. Sta.

Crane Mills

Thermograph 13088

THERMOGRAPH SUMMARY

Position 306

THOMES - LOWER THOMES CREEK

Legal 23N09W02 (SE 1/4 SE 1/4)

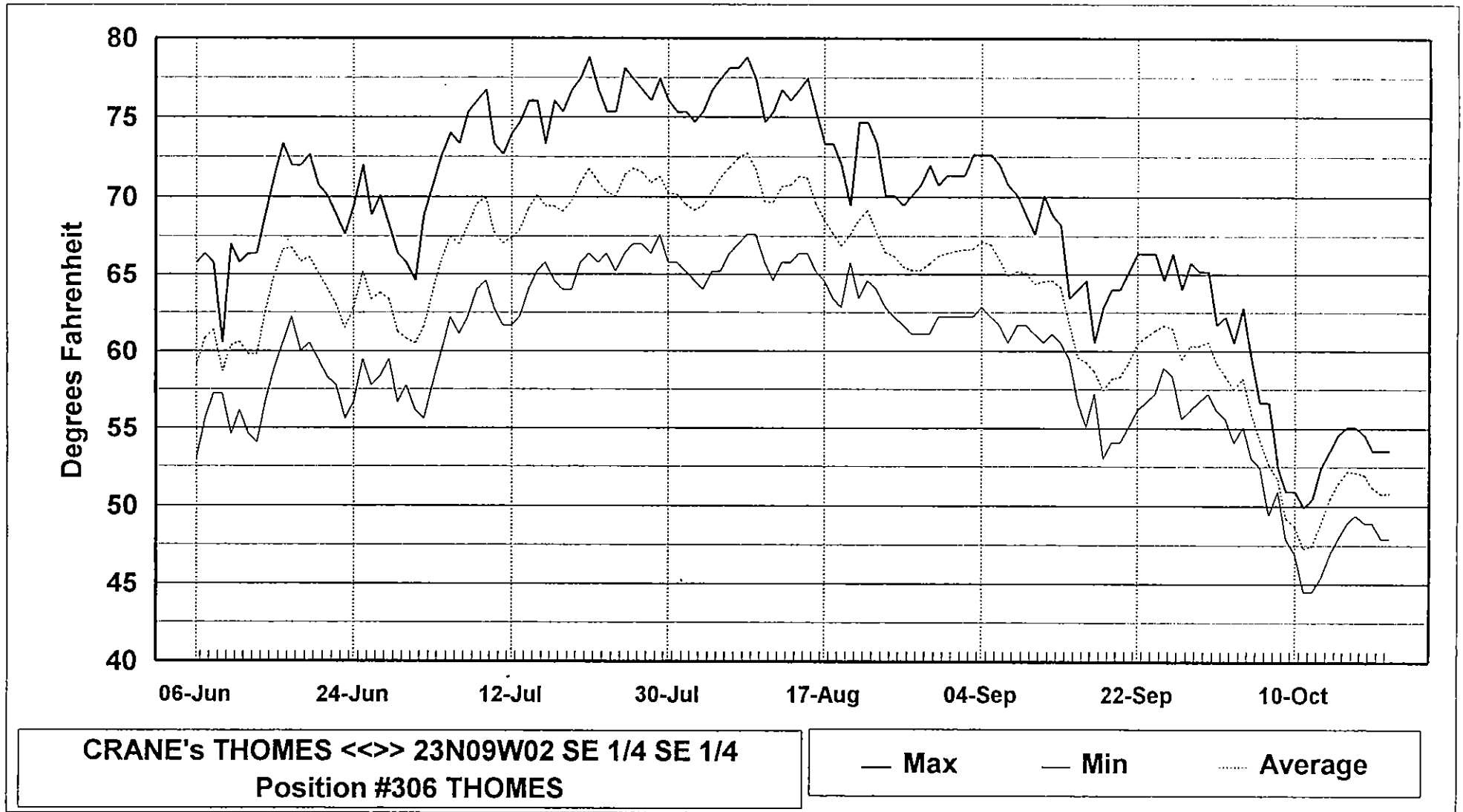
Date	Max	Min	Avg
05/16			
05/17			
05/18			
05/19			
05/20			
05/21			
05/22			
05/23			
05/24			
05/25			
05/26			
05/27			
05/28			
05/29			
05/30			
05/31			
06/01			
06/02			
06/03			
06/04			
06/05			
06/06			
06/07			
06/08			
06/09			
06/10			
06/11			
06/12			
06/13			
06/14			
06/15			
06/16			
06/17	51.97	47.91	49.93
06/18	54.05	47.91	51.06
06/19	51.45	45.94	49.18
06/20	54.58	46.43	50.36
06/21	57.78	48.91	53.04
06/22	59.43	51.97	55.77
06/23	61.11	53.00	56.86
06/24	62.25	54.58	58.43
06/25	63.99	55.63	59.54
06/26	63.41	56.70	59.79
06/27	64.58	56.17	60.27
06/28	63.99	57.24	60.87
06/29	62.83	57.24	60.41
06/30	63.99	57.78	61.09
07/01	65.18	57.24	61.22
07/02	66.37	58.33	62.19

Date	Max	Min	Avg
07/03	66.37	58.88	62.88
07/04	66.98	58.88	63.28
07/05	66.98	59.43	63.63
07/06	67.59	60.55	63.97
07/07	65.18	58.88	62.16
07/08	63.41	58.88	61.30
07/09	63.99	60.55	62.03
07/10	61.68	56.70	59.50
07/11	61.68	56.17	59.23
07/12	61.11	56.70	59.22
07/13	63.99	55.63	59.49
07/14	66.98	58.88	62.48
07/15	68.83	60.55	64.46
07/16	70.08	62.25	66.06
07/17	68.83	62.83	66.10
07/18	68.83	64.58	66.81
07/19	65.77	62.25	64.41
07/20	68.83	61.11	64.99
07/21	70.08	63.41	66.59
07/22	70.08	63.41	66.77
07/23	70.08	62.83	66.65
07/24	71.36	63.41	67.51
07/25	71.36	64.58	67.90
07/26	70.08	61.68	66.31
07/27	71.36	62.83	67.16
07/28	72.66	64.58	68.56
07/29	70.72	63.99	67.81
07/30	72.01	63.41	67.45
07/31	72.01	63.99	67.76
08/01	73.32	64.58	68.88
08/02	73.32	65.18	69.00
08/03	73.32	64.58	69.01
08/04	74.66	66.98	70.45
08/05	74.66	65.77	70.20
08/06	74.66	66.98	70.57
08/07	72.66	66.37	69.61
08/08	70.08	63.41	66.95
08/09	71.36	62.25	66.50
08/10	70.72	63.41	66.89
08/11	69.45	62.25	65.81
08/12	70.08	61.68	65.70
08/13	70.72	63.41	66.60
08/14	72.66	63.99	68.02
08/15	74.66	65.77	69.58
08/16	72.66	66.37	69.11
08/17	68.83	62.25	65.38
08/18	68.83	61.11	64.87
08/19	70.08	61.68	65.59

Date	Max	Min	Avg
08/20	72.01	62.25	66.87
08/21	72.66	63.99	68.27
08/22	70.72	64.58	67.86
08/23	74.66	65.77	69.70
08/24	70.08	63.41	66.89
08/25	70.08	62.83	66.29
08/26	70.08	62.83	66.11
08/27	70.08	62.25	65.87
08/28	70.72	62.25	66.00
08/29	68.83	62.25	65.21
08/30	68.83	61.68	65.15
08/31	69.45	62.25	65.69
09/01	69.45	62.83	66.05
09/02	69.45	62.25	65.75
09/03	68.83	61.68	65.33
09/04	68.83	61.11	64.86
09/05	68.83	61.11	64.68
09/06	69.45	61.68	65.33
09/07	69.45	62.25	65.86
09/08	70.08	62.83	66.17
09/09	69.45	62.83	66.10
09/10	70.08	62.83	66.23
09/11	70.72	63.41	66.65
09/12	70.72	63.41	66.89
09/13	70.72	63.41	66.96
09/14	70.72	63.99	67.25
09/15	70.08	63.99	67.14
09/16	68.83	63.99	66.27
09/17	69.45	62.83	65.80
09/18	70.08	62.83	66.23
09/19	70.08	63.41	66.46
09/20	70.08	63.99	66.89
09/21	68.21	64.58	66.51
09/22	68.21	63.41	65.85
09/23	68.21	62.83	65.55
09/24	66.37	63.41	64.70
09/25	66.37	61.11	63.90
09/26	66.98	61.68	64.19
09/27	65.77	61.11	63.48
09/28	64.58	59.99	62.09
09/29	63.41	57.78	60.57
09/30	63.41	57.78	60.68
10/01	63.99	58.33	60.74
10/02	63.99	58.33	60.95
10/03	64.58	58.88	61.36
10/04	61.68	57.24	59.22
10/05	60.55	55.63	57.91
10/06	59.99	55.63	57.91

Date	Max	Min	Avg
10/07	59.99	55.63	57.74
10/08	59.43	55.10	57.52
10/09	59.99	55.10	57.63
10/10	60.55	55.63	58.07
10/11	59.43	56.17	57.63
10/12	57.78	52.48	55.17
10/13	58.33	52.48	54.96
10/14	58.33	52.48	55.28
10/15	58.88	53.00	55.76
10/16	58.33	53.00	55.75
10/17	58.33	52.48	55.33
10/18	58.88	53.53	55.97
10/19	58.33	53.00	55.33
10/20	57.78	53.00	55.29
10/21	56.17	52.48	54.48
10/22	54.05	49.92	51.77
10/23	52.48	48.41	50.54
10/24	51.97	47.42	49.88
10/25	51.45	47.42	49.68
10/26	54.58	49.41	51.88
10/27	54.58	49.92	52.55
10/28	54.58	50.43	52.75
10/29	55.10	50.94	53.06
10/30	54.58	50.43	52.75
10/31	54.05	51.45	52.75
11/01	53.53	49.41	51.61
11/02	51.97	48.91	50.69
11/03	50.94	46.92	48.92
11/04	49.41	45.45	47.82
11/05	49.41	46.43	47.82
11/06	48.91	45.94	47.53
11/07			
11/08			
11/09			
11/10			
11/11			
11/12			
11/13			
11/14			
11/15			
11/16			
11/17			
11/18			
11/19			
11/20			
11/21			
11/22			

1997
Lower Thomes Creek Sta.



1997
Lower Thames Crk. Sta.

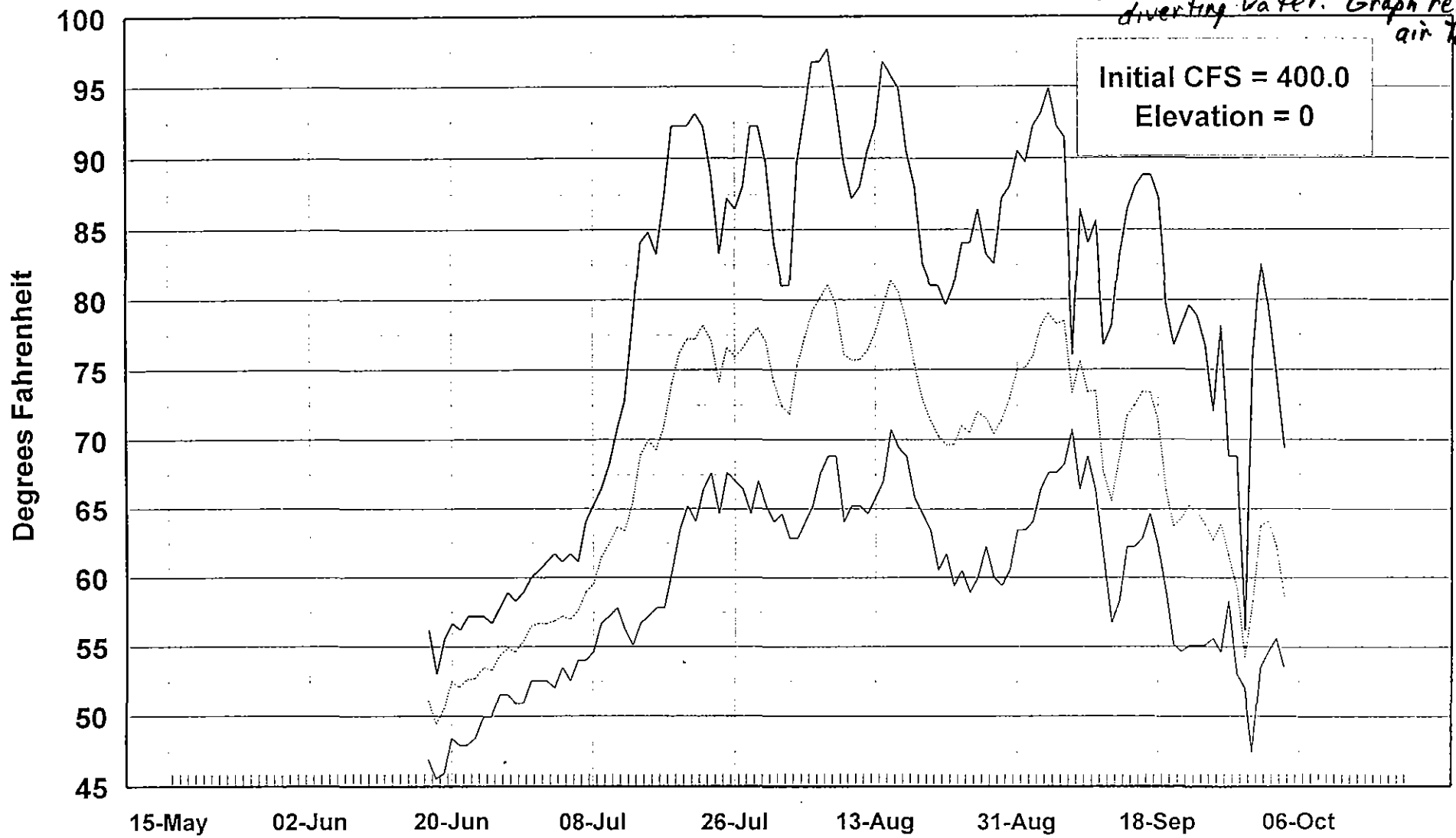
Position #306 THOMES

M	D	MAX	MIN	AVG	M	D	MAX	MIN	AVG	M	D	MAX	MIN	AVG	M	D	MAX	MIN	AVG
6	6	65.77	53.00	59.00	7	14	76.03	63.99	69.26	8	21	74.66	63.41	68.55	9	28	65.77	56.17	60.32
6	7	66.37	55.63	60.85	7	15	76.03	65.18	70.12	8	22	74.66	64.58	69.14	9	29	65.18	56.70	60.31
6	8	65.77	57.24	61.39	7	16	73.32	65.77	69.43	8	23	73.32	63.99	67.70	9	30	65.18	57.24	60.59
6	9	60.55	57.24	58.66	7	17	76.03	64.58	69.42	8	24	70.08	62.83	66.41	10	1	61.68	56.17	59.18
6	10	66.98	54.58	60.33	7	18	75.34	63.99	69.06	8	25	70.08	62.25	66.18	10	2	62.25	55.63	58.35
6	11	65.77	56.17	60.61	7	19	76.72	63.99	69.76	8	26	69.45	61.68	65.46	10	3	60.55	54.05	57.49
6	12	66.37	54.58	59.79	7	20	77.42	65.77	70.90	8	27	70.08	61.11	65.23	10	4	62.83	55.10	58.20
6	13	66.37	54.05	59.77	7	21	78.83	66.37	71.80	8	28	70.72	61.11	65.24	10	5	59.43	53.00	55.97
6	14	68.83	56.70	62.54	7	22	76.72	65.77	70.94	8	29	72.01	61.11	65.67	10	6	56.70	52.48	54.21
6	15	71.36	58.88	64.94	7	23	75.34	66.37	70.27	8	30	70.72	62.25	66.18	10	7	56.70	49.41	52.61
6	16	73.32	60.55	66.61	7	24	75.34	65.18	70.04	8	31	71.36	62.25	66.36	10	8	52.48	50.94	51.71
6	17	72.01	62.25	66.74	7	25	78.12	66.37	71.41	9	1	71.36	62.25	66.50	10	9	50.94	47.91	49.22
6	18	72.01	59.99	65.82	7	26	77.42	66.98	71.78	9	2	71.36	62.25	66.61	10	10	50.94	46.92	48.67
6	19	72.66	60.55	66.11	7	27	76.72	66.98	71.56	9	3	72.66	62.25	66.63	10	11	49.92	44.48	47.28
6	20	70.72	59.43	65.09	7	28	76.03	66.37	70.86	9	4	72.66	62.83	67.11	10	12	50.43	44.48	47.48
6	21	70.08	58.33	64.08	7	29	77.42	67.59	71.29	9	5	72.66	62.25	66.93	10	13	52.48	45.45	48.94
6	22	68.83	57.78	63.02	7	30	76.03	65.77	70.22	9	6	72.01	61.68	65.95	10	14	53.53	46.92	50.45
6	23	67.59	55.63	61.49	7	31	75.34	65.77	70.16	9	7	70.72	60.55	64.88	10	15	54.58	47.91	51.42
6	24	69.45	56.70	62.83	8	1	75.34	65.18	69.52	9	8	70.08	61.68	65.16	10	16	55.10	48.91	52.19
6	25	72.01	59.43	65.17	8	2	74.66	64.58	69.16	9	9	68.83	61.68	65.09	10	17	55.10	49.41	52.14
6	26	68.83	57.78	63.37	8	3	75.34	63.99	69.43	9	10	67.59	61.11	64.37	10	18	54.58	48.91	51.98
6	27	70.08	58.33	63.79	8	4	76.72	65.18	70.32	9	11	70.08	60.55	64.52	10	19	53.53	48.91	51.21
6	28	68.21	59.43	63.34	8	5	77.42	65.18	71.23	9	12	68.83	61.11	64.56	10	20	53.53	47.91	50.75
6	29	66.37	56.70	61.28	8	6	78.12	66.37	71.86	9	13	68.21	60.55	64.15	10	21	53.53	47.91	50.80
6	30	65.77	57.78	60.81	8	7	78.12	66.98	72.44	9	14	63.41	59.43	61.74					
7	1	64.58	56.17	60.49	8	8	78.83	67.59	72.76	9	15	63.99	56.70	59.52					
7	2	68.83	55.63	61.58	8	9	77.42	67.59	71.75	9	16	64.58	55.10	59.27					
7	3	70.72	57.78	63.83	8	10	74.66	65.77	69.70	9	17	60.55	57.24	58.66					
7	4	72.66	59.99	65.95	8	11	75.34	64.58	69.67	9	18	62.83	53.00	57.40					
7	5	73.99	62.25	67.50	8	12	76.72	65.77	70.62	9	19	63.99	54.05	58.17					
7	6	73.32	61.11	66.96	8	13	76.03	65.77	70.74	9	20	63.99	54.05	58.28					
7	7	75.34	62.25	68.15	8	14	76.72	66.37	71.32	9	21	65.18	55.10	59.22					
7	8	76.03	63.99	69.57	8	15	77.42	66.37	71.19	9	22	66.37	56.17	60.44					
7	9	76.72	64.58	69.94	8	16	75.34	65.18	69.58	9	23	66.37	56.70	60.88					
7	10	73.32	62.83	67.78	8	17	73.32	64.58	68.50	9	24	66.37	57.24	61.34					
7	11	72.66	61.68	67.01	8	18	73.32	63.41	67.66	9	25	64.58	58.88	61.65					
7	12	73.99	61.68	67.39	8	19	72.01	62.83	66.85	9	26	66.37	58.33	61.49					
7	13	74.66	62.25	67.89	8	20	69.45	65.77	67.60	9	27	63.99	55.63	59.41					

1998

Lower Thames Creek Sta.

- HOBO went dry to
due road reconstruction
diverting water. Graph reflect
air Temp



CRANE's THOMES <>> 23N09W02 SE 1/4 SE 1/4
Position #306 THOMES

— Max — Min Average

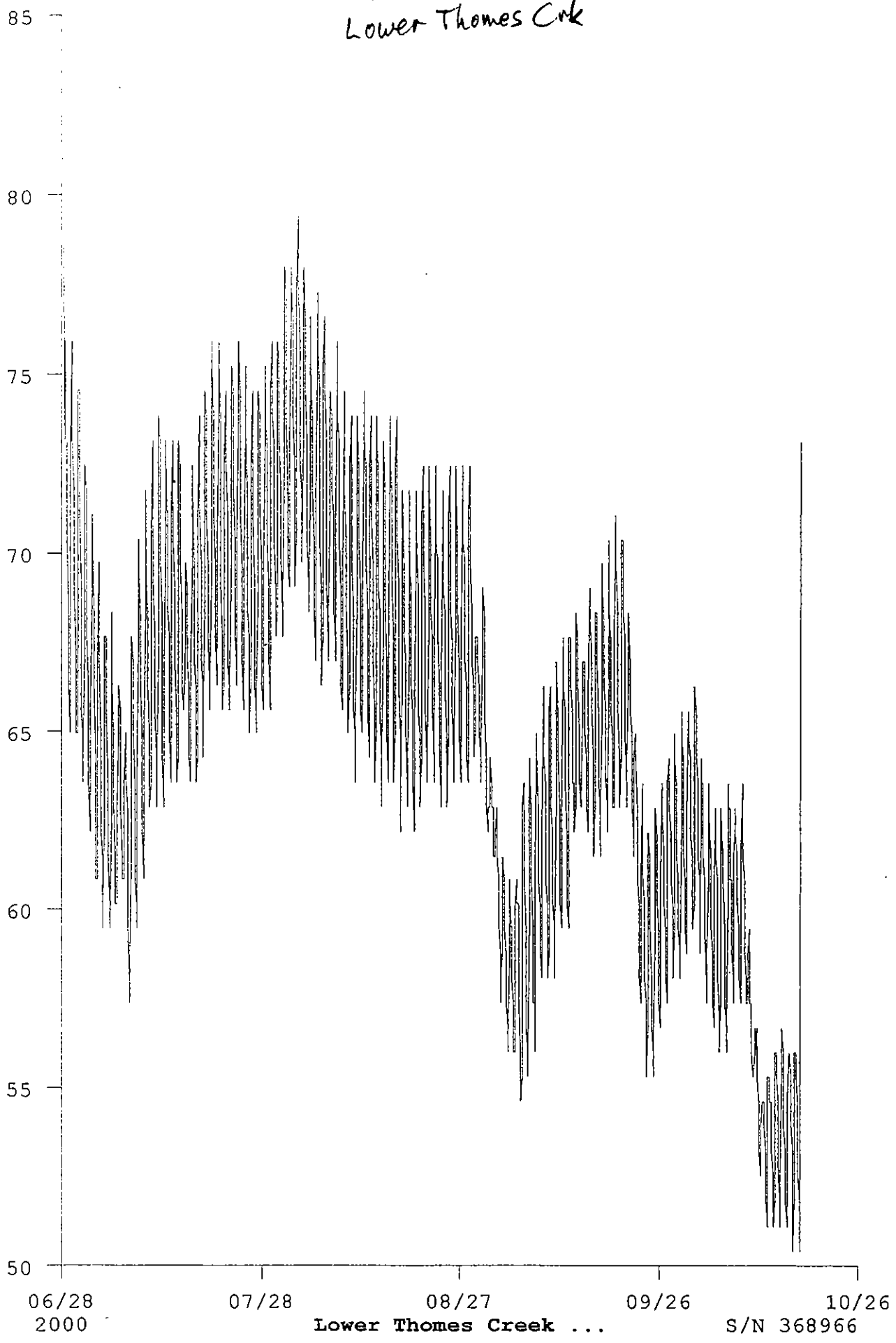
HOB0 went dry due to channel diversion above. Data reflects air temp.

Position #306 THOMES

M	D	MAX	MIN	AVG	M	D	MAX	MIN	AVG	M	D	MAX	MIN	AVG	M	D	MAX	MIN	AVG					
5	15				6	16				7	18	92.20	60.50	74.09	8	19	82.50	64.60	72.94	9	20	76.70	55.10	63.71
5	16				6	17	56.20	46.90	51.09	7	19	92.20	63.40	76.24	8	20	81.00	63.40	71.43	9	21	78.10	54.60	64.32
5	17				6	18	53.00	45.50	49.44	7	20	92.20	65.20	77.22	8	21	81.00	60.50	70.29	9	22	79.60	55.10	65.25
5	18				6	19	55.60	45.90	50.53	7	21	93.10	64.00	77.20	8	22	79.60	61.70	69.66	9	23	78.80	55.10	64.72
5	19				6	20	56.70	48.40	52.46	7	22	92.20	66.40	78.19	8	23	81.00	59.40	69.67	9	24	76.70	55.10	63.83
5	20				6	21	56.20	47.90	52.05	7	23	88.80	67.60	77.12	8	24	84.00	60.50	71.04	9	25	72.00	55.60	62.68
5	21				6	22	57.20	47.90	52.62	7	24	83.20	64.60	74.15	8	25	84.00	58.90	70.52	9	26	78.10	54.60	63.84
5	22				6	23	57.20	48.40	52.67	7	25	87.20	67.60	76.62	8	26	86.40	60.00	72.03	9	27	68.80	58.30	61.59
5	23				6	24	57.20	49.90	53.48	7	26	86.40	67.00	75.97	8	27	83.20	62.20	71.60	9	28	68.80	53.00	59.12
5	24				6	25	56.70	49.90	53.34	7	27	88.00	66.40	76.53	8	28	82.50	60.00	70.45	9	29	56.20	52.00	54.22
5	25				6	26	57.80	51.50	54.40	7	28	92.20	64.60	77.40	8	29	87.20	59.40	71.41	9	30	76.00	47.40	58.30
5	26				6	27	58.90	51.50	54.91	7	29	92.20	67.00	77.99	8	30	88.00	60.50	72.95	10	1	82.50	53.50	63.70
5	27				6	28	58.30	50.90	54.65	7	30	89.70	65.20	77.00	8	31	90.50	63.40	75.07	10	2	79.60	54.60	64.06
5	28				6	29	58.90	50.90	55.45	7	31	84.00	64.00	74.17	9	1	89.70	63.40	75.18	10	3	74.70	55.60	62.26
5	29				6	30	60.00	52.50	56.51	8	1	81.00	64.60	72.42	9	2	92.20	64.00	76.00	10	4	69.40	53.50	58.61
5	30				7	1	60.50	52.50	56.77	8	2	81.00	62.80	71.82	9	3	93.10	66.40	78.09	10	5			
5	31				7	2	61.10	52.50	56.74	8	3	89.70	62.80	75.31	9	4	94.90	67.60	79.06	10	6			
6	1				7	3	61.70	52.00	56.92	8	4	93.10	64.00	77.31	9	5	92.20	67.60	78.30	10	7			
6	2				7	4	61.10	53.50	57.25	8	5	96.80	65.20	79.16	9	6	91.40	68.20	78.48	10	8			
6	3				7	5	61.70	52.50	57.02	8	6	96.80	67.60	80.10	9	7	76.00	70.70	73.35	10	9			
6	4				7	6	61.10	54.00	57.65	8	7	97.70	68.80	81.05	9	8	86.40	66.40	75.62	10	10			
6	5				7	7	64.00	54.00	58.99	8	8	94.00	68.80	79.69	9	9	84.00	68.80	73.43	10	11			
6	6				7	8	65.20	54.60	59.57	8	9	89.70	64.00	76.12	9	10	85.60	66.40	73.54	10	12			
6	7				7	9	66.40	56.70	61.47	8	10	87.20	65.20	75.68	9	11	76.70	61.70	67.72	10	13			
6	8				7	10	68.20	57.20	62.51	8	11	88.00	65.20	75.71	9	12	78.10	56.70	65.58	10	14			
6	9				7	11	70.70	57.80	63.70	8	12	90.50	64.60	76.36	9	13	83.20	58.30	68.73	10	15			
6	10				7	12	72.70	56.20	63.42	8	13	92.20	65.80	77.65	9	14	86.40	62.20	71.74	10	16			
6	11				7	13	78.10	55.10	65.57	8	14	96.80	67.00	79.52	9	15	88.00	62.20	72.50	10	17			
6	12				7	14	84.00	56.70	68.92	8	15	95.80	70.70	81.36	9	16	88.80	62.80	73.44	10	18			
6	13				7	15	84.80	57.20	70.00	8	16	94.90	69.40	80.52	9	17	88.80	64.60	73.40	10	19			
6	14				7	16	83.20	57.80	69.27	8	17	90.50	68.80	78.49	9	18	87.20	62.20	71.28	10	20			
6	15				7	17	87.20	57.80	71.00	8	18	88.00	65.80	75.42	9	19	79.60	58.90	66.33					

2000
Lower Thames Crk

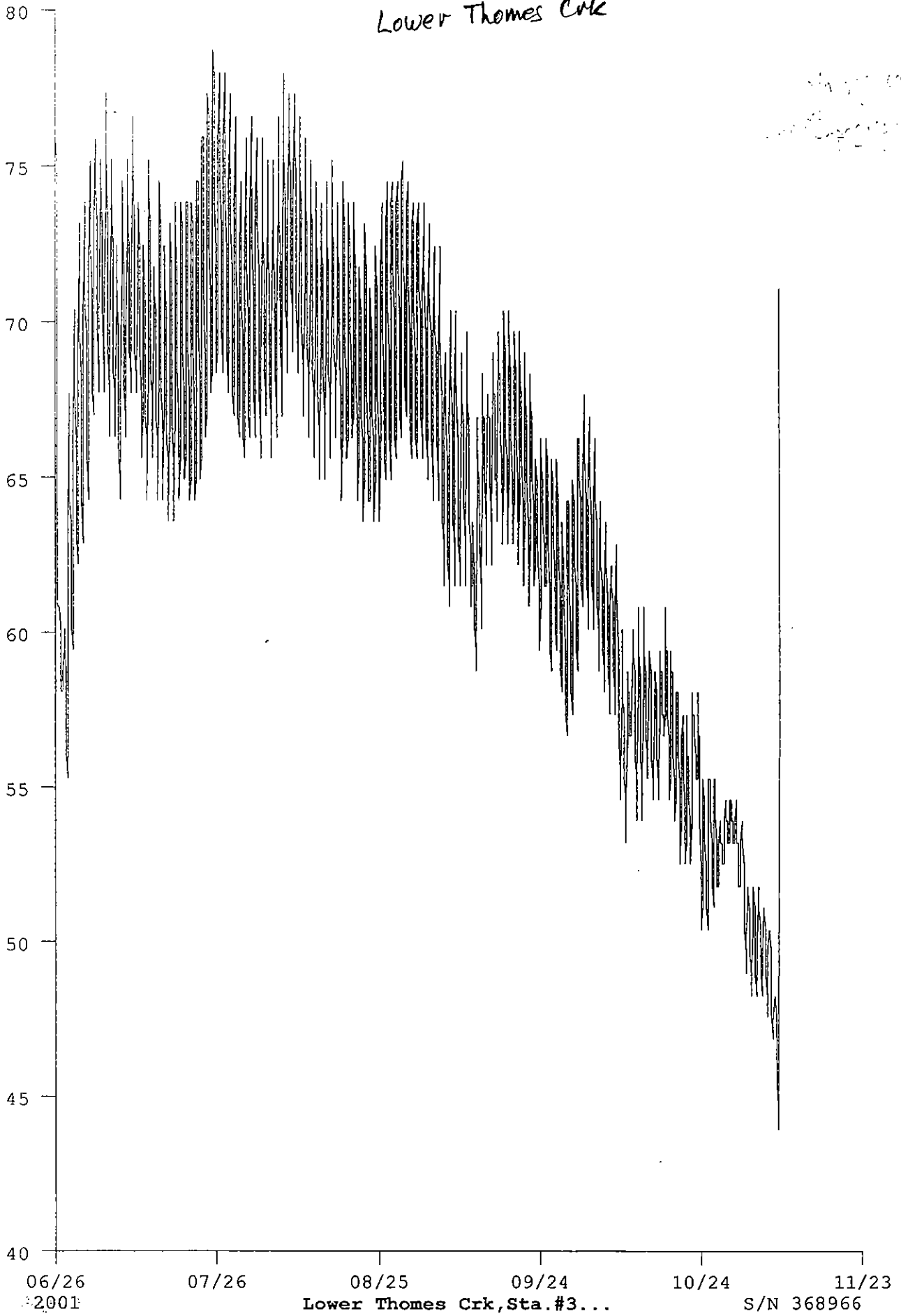
F
E
D
C
B
A
0
9
8
7
6
5
4
3
2
1
0
-1
-2
-3
-4
-5
-6
-7
-8
-9
-10
-11
-12
-13
-14
-15
-16
-17
-18
-19
-20
-21
-22
-23
-24
-25
-26
-27
-28
-29
-30
-31
-32
-33
-34
-35
-36
-37
-38
-39
-40
-41
-42
-43
-44
-45
-46
-47
-48
-49
-50



2001
Lower Thames Crk

St. Johns River
Lower Thames Crk

T
E
M
P
E
R
A
T
U
R
E



Lower Thomas Crk

2002

Raw data

T
e
m
p
e
r
a
t
u
r
e
F

